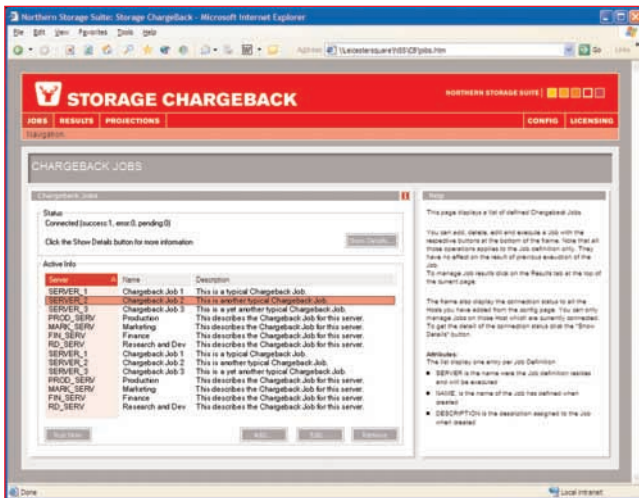


NORTHERN STORAGE CHARGEBACK

SOFTWARE PRODUCT DESCRIPTION
VERSION: 2005 [APRIL 2005]

Northern Storage Chargeback makes business sense out of senseless storage use. By metering storage use and calculating the attendant operating costs, Northern Storage Chargeback can bring the cost of managing storage back to the responsible party. Northern Storage Chargeback can collect usage data from any disk object [drive, folder], but also use quota usage information from Northern Quota Server, or mailbox usage information from Microsoft Exchange. Northern Storage Chargeback is a complete, end-to-end solution that collects usage statistics, determines appropriate pricing models, and generates reports or invoices for web publication or print out.



USABILITY

- Define Billing Classes that accurately match the real cost of providing storage resources.
- Identify cost centers; users, user groups, paths [folders, shares, logical drives, etc.].
- Associate your Billing Classes with the cost centers identified to create your organization specific Chargeback Jobs.
- Wizard-driven configuration and job definition tools make the creation and management of advanced chargeback systems straightforward.

AUTOMATION

- Once created, your Chargeback Jobs are self-managing; storage is metered and costs are calculated all according to your rules, but without the need for your involvement.
- Extensive scheduling features offer daily, weekly, monthly, quarterly or annual invoices and reports.
- Automatic notifications; receive e-mail or popup notification on Chargeback Job completion.

OUTPUT FORMATS

- Generate XLS and CSV output to integrate with your billing and financial applications.

- Export to customizable Microsoft Excel® templates for further data processing, analysis and presentation.
- Usage, costs and trend statistics are exported to an MS SQL database, facilitating enterprise-wide integration.

MULTIPLE DATA SOURCES

- Chargeback jobs can collect usage data from:
 - Disk objects [drives or folders]
 - Quota Server quotas [size]
 - MS Exchange mailboxes [user or usergroup]

FLEXIBLE PRICING MODELS

- Implement tiered pricing models that mimic the underlying costs of supplying a certain data storage system, or fulfilling a specific Service Level Agreement [SLA].
- Costs can be calculated on different cost centers; user, user group, path [share, folder, logical drive, etc.].
- Generate invoices and cost reports per customer, department, etc.

TRENDING

- Generate reports that demonstrate different cost patterns within your network; identify the fastest growing cost center, etc.
- Generate historical trend reports to measure the impact of chargeback, quota or user-involvement policies.
- Extrapolate historical data to establish cost projections and accurately determine necessary budgets.

ENTERPRISE ARCHITECTURE

Northern Storage Chargeback offers full support for advanced storage devices.

- Cluster aware, accurate handling of virtual server fail-overs and moves.
- NAS support, fully-functional on all NAS devices using the CIFS standard.
- Have chargeback jobs run on a single host, across multiple hosts or across the entire network.



NORTHERN